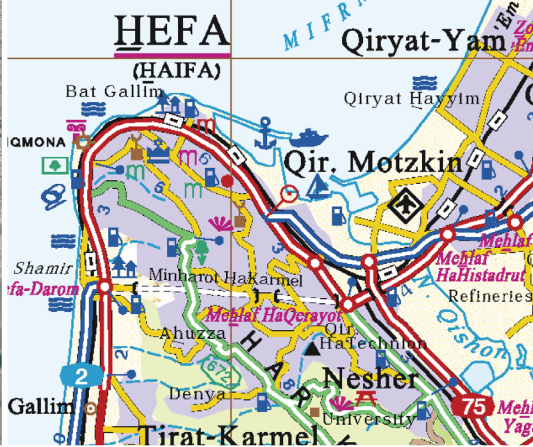
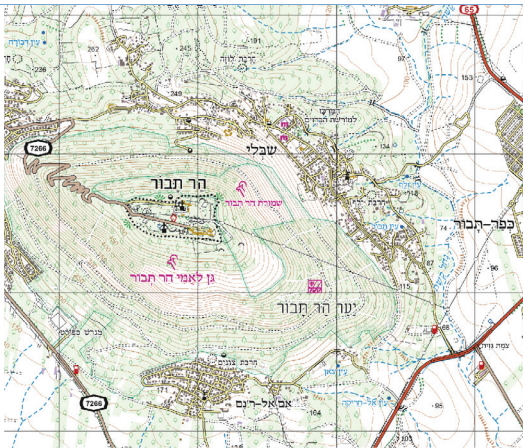




NATIONAL REPORT



National Cartographic Report - Israel, 2020-2023



ICS Submission to host the 33rd International Cartographic Conference (ICC) in Tel Aviv, 2027



Please see the ICS's [bidding documents](#) for hosting the 33rd International Cartographic Conference (ICC) in Tel Aviv 2027!

The voting will take place at the General Assembly in Cape Town.

Please vote for Tel Aviv!

For more information, click [here](#)





Tim Trainer
President
International Cartographic Association

**BID FOR THE 33RD INTERNATIONAL CARTOGRAPHIC CONFERENCE
AND 20TH GENERAL ASSEMBLY, 2027**

Dear Mr. President,

The Israeli Association for Cartography and GIS (ICS), as the national member for Israel to the International Cartographic Association (ICA), has the honour to submit this bid to host the 33RD International Cartographic Conference and 20th General Assembly in the city of Tel Aviv-Yafo, Israel in 2027 (ICC 2027).

Israel has been an acting member of the ICA since the first general assembly of the ICA in Paris, 1961. An attempt to bring ICC to Israel in 2001 was unsuccessful, which left our region of the world without significant ICA activity. In bringing ICC to Israel, we hope to promote cartography in our country, and expose the ICA to Israel's vast experience in mapping, geospatial technologies, and our historical cartographic collections of the Holy Land. It is important that the ICA, in its international context, explore regions of the world and cultures of its members that it has not explored before.

For this purpose, the ICS, in collaboration with the Survey of Israel and the Tel Aviv-Yafo Municipality, has selected the city of Tel Aviv-Yafo, with its international experienced Expo Tel Aviv International Convention Center, to host the ICC in 2027. Tel Aviv is Israel's main commercial, cultural and economic hub, with a Mediterranean climate, a sandy coastline and is an internationally famous tourist site. Tel Aviv is highly experienced in hosting large international events and is happy to contribute to hosting an ICC.

We hope that the ICA takes kind consideration for our bid and intent to contribute to the International cartographic community.

Regards,

Tamar Soffer, ICS President

Oren Raz, ICS Secretary and Treasurer



Israel National Report – Table of Contents

ICS Submission to host the 33rd International Cartographic Conference (ICC) in Tel Aviv, 2027	1
Israeli Association for Cartography and Geographic Information Systems (R.A. 580397586)	5
Profile	5
Activities in Israel, 2020-2023	6
ICA Activities in Israel	7
Barbara Petchenik Children's Map Competition	9
Participation in ICA Events	13
Israel's Achievements at ICC 2021, Florence Italy	14
Governmental Agencies	16
Survey of Israel	16
Central Bureau of Statistics	23
Map Libraries and Collections	27
Forum for Map Collections in Israel	27
Eran Laor Cartographic Collection, The National Library of Israel	28
Bloomfield Library for the Humanities and Social Sciences - Map Department at the Hebrew University in Jerusalem	30
The Geography Department of the Hebrew University	34
Tel Aviv University Geography Library	35
Younes & Soraya Nazarian Library Map Collection - University of Haifa	37
Tel Hai Historical Map Archive- Tel Hai Academic College	38
Yad Izhak Ben-Zvi Map Archive	39
Private Sector	40
Systematics Technologies R.G. LTD	40
Mapa	41
Shvilnet L.T.D.	44
GeoCartography Knowledge Group	45

OFEK Aerial Photography	47
SIMPLEX Mapping Solutions L.T.D.	49
Avigdor Orgad Maps	50
Blustein Mapot Veod L.T.D.	51
Bonus-Yavne Publishing	52
Israel Hiking and Biking Map	53
Ad-Or- Mapping the Old City of Jerusalem	54
Amud Anan Online Geo-Encyclopedia	55
Reuven Soffer	56
Touch Israel	57
Israel Orienteering Association	58
Obituaries	59
Prof. Moshe Brawer 1919-2020	59
Prof. Naftali Kadmon 1925-2022	60
Dr. Dov Gavish 1937-2022	61

Israeli Association for Cartography and Geographic Information Systems (R.A. 580397586)



Profile

The Israeli Cartographic Association and Geographic Information Systems (ICS) is a meeting point and a center of knowledge for those involved in mapping and cartography and for users of geographic information systems. The Association is a registered at the Israeli Justice Ministry as a nonprofit organization since the 1970s.

The association is open to members from Israel in all fields - academia, education, private companies and businesses, governmental bodies, non-profit organizations and of course all citizens with an interest in the field.

Israel has been a permanent member with the International Cartographic Association (ICA) since the first General Assembly in Paris, 1961. The ICS is responsible for paying the ICA dues and has the right to vote at the ICA General Assembly.

Mission

The main goals of the Association are:

- ❖ To initiate exchanges of information between members of the association and others.
- ❖ Conduct professional conferences.
- ❖ Publish professional publications.
- ❖ Maintain ties with institutions with similar goals in Israel and abroad.
- ❖ To serve as Israel's representative in the International Cartographic Association (ICA).

Staff

- ❖ President- Tamar Soffer
- ❖ Secretary-Treasurer- Oren Raz, Central Bureau of Statistics
- ❖ Audit Committee- Adi Ben-Nun, GIS center, Hebrew University of Jerusalem
- ❖ Rotem Elinson
- ❖ Dror Bogin
- ❖ Past President- Prof. Amatzia Peled, Haifa University

Activities in Israel, 2020-2023

Conferences

The ICS holds an annual conference. These conferences are a full day gathering, consisting of four sessions and workshops.



For conference programs, abstract booklets and presentations, please check out our website:

- ❖ 2020 conference - <https://isrcartogis.wixsite.com/isrcartogis/2020>
- ❖ 2021 conference - Due to Covid-19, there was no conference in 2021.
- ❖ 2022 conference - <https://isrcartogis.wixsite.com/isrcartogis/2022>
- ❖ 2023 conference - <https://isrcartogis.wixsite.com/isrcartogis/2023>

Covid-19 restrictions, and opportunities taken

Due to the Covid-19 Pandemic and in conjunction with health regulations in Israel, ICS activity was also affected.

There was no conference in 2021, and the conference in 2022 was a fully online event.

However, this led to a beginning of a tradition to record all our activities and upload them to the web. The ICS now has a [YouTube channel](#), where materials can be found, and a [LinkedIn](#) account was also set up.

As of 2023, we are back to in-person events. Also, in order to allow more participation, we are allowing free entrance to our conference and relying on sponsorships to cover the conference costs. These are the sponsors for 2023:



ICA Activities in Israel

In February **2020**, just 2 weeks before the world shut down due to the Covid-19 Pandemic, The ICS had the privilege of hosting a delegation from the ICA in Israel. ICA Past President Prof. Georg Gartner, ICA Secretary General, Dr. Thomas Schulz, and ICA Vice-President Vit Vozenilek came for a 4-day visit.

The visit included technical visits and tours:

Technical visits

- ❖ **Survey of Israel in Tel Aviv** – An extensive review of SOI activities and products by the Chief Scientist Prof. Yaron Felus and the heads of the Cartographic and Geodesic Departments;
- ❖ **Central Bureau of Statistics in Jerusalem** – A half day seminar on cartography and statistics with over 100 participants from the Bureau and other governmental agencies. All 3 guests gave talks to the interested audience, including all the department heads and the National Statistician, Prof. Danny Pfefferman;
- ❖ **ICS conference in Tel Aviv** -Lectures at the opening session, ceremony for the winning children of the map competition;
- ❖ **Map Collections Forum** – attendance at the Forum meeting.

Tours

- ❖ Trip to the Dead Sea and Masada National Park
- ❖ Tour of the Old City of Jerusalem
- ❖ Tour of Tel Aviv UNESCO White City, Jaffa and city markets



A full house seminar on cartography at the Central Bureau of Statistics, attended also by the National Statistician, Prof. Danny Pfeffermann.



Inspecting the wildlife in the desert.



At the sea level marker on the way to the Dead Sea and Masada National Park.



Inspired by automatic maps produced by the Survey of Israel.



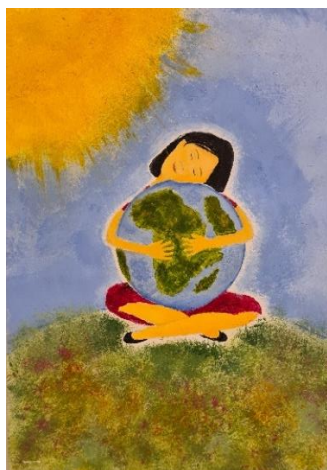
Ceremony for the winning children in the map competition.

Barbara Petchenik Children's Map Competition

Israel continues its participation in the Barbara Petchenik Children's Map Competition.

The ICS, in collaboration with the Ministry of Education, conducted two national competitions in 2021 and 2023. The winning maps were sent to participate in the international competition at the International Cartographic Conference (ICC) in Florence, Italy in 2021 and in Cape Town, South Africa in 2023.

National [winners](#) of the 2021 competition:



*We Love Maps; Orel Levin (15),
School – Mekif Z, Ashdod.*



Stop the Pandemic – We Love to Travel; Mitvei Pilko (10)



*The Earth is Our Home, We Need to Make
it Last; Iris Troian (13),
School – Mekif Z, Ashdod.*



*We Love Maps; Noya Noam (12),
School – Talya Ulpana, Jerusalem*



*Each Earth That She Made is Different,
Because There is Only One Earth Like
Ours; Maya Zilberman,
School – Mekif Z, Ashdod*



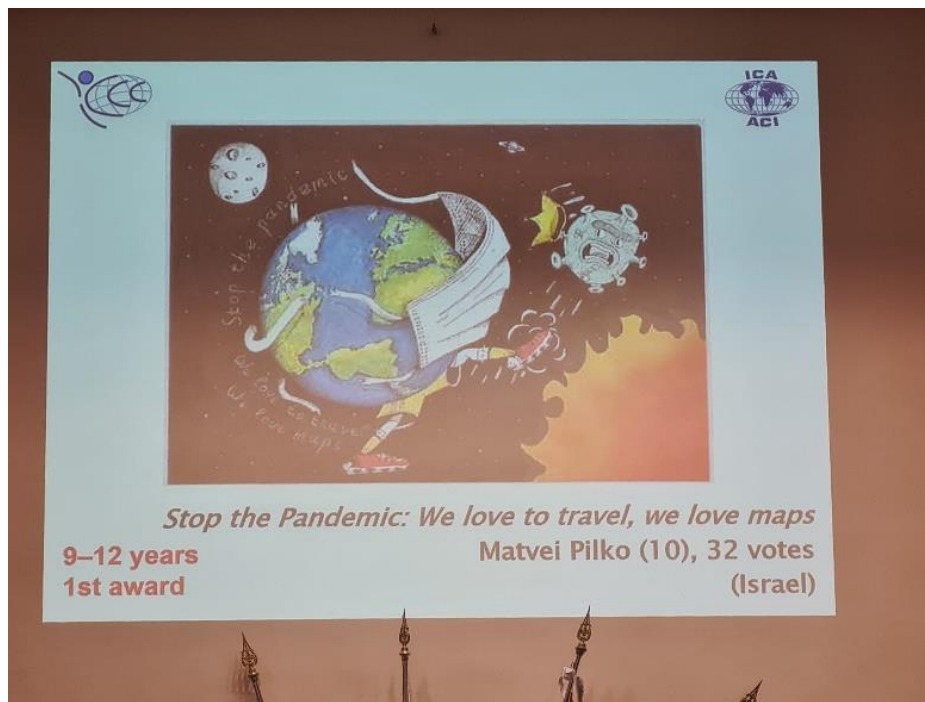
*Hope; David Sosis (15),
School – Mekif Z, Ashdod*



Award ceremony at the National Library in Jerusalem – Laor Cartographic Collection.



Israeli children's maps displayed at the ICC 2021 Florence, Italy.



For the first time in many years, Israel returns with a prize from the Barbara Petchenik Children's Map Competition.

Matvei Pilko (10), won the

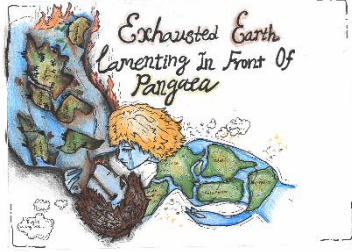
1st Place Award

in the 9-12 years category.



Matvei Pilko (age 10), receiving a special award for his achievement from ICS and Ministry of Education representatives, at a ceremony held at the National Library in Jerusalem.

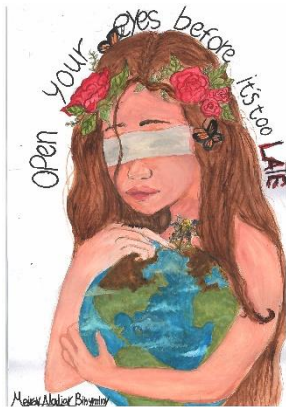
National winners of the 2023 competition:



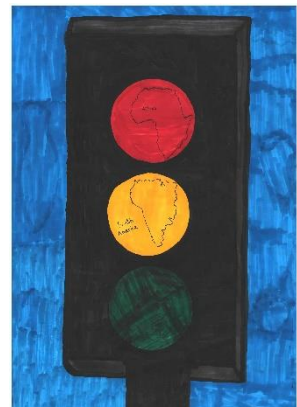
Exhausted Earth, Kira Balasanov, Age 14, High School- Tihon Hadash Beit Eliezer, Hadera



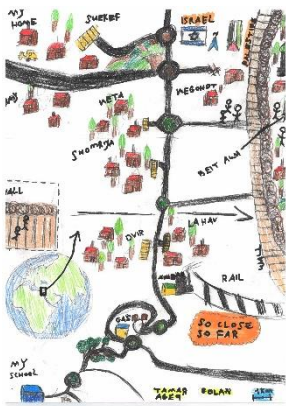
The World is Perfect, But Not Us, Dei Maayan Age 12 and Lines Wolfson Age 14, School – Beit Ekshtein, Ofakim



Open Your Eyes Before It's Too Late, Meirav Nadjar Age 13, School- Tihon Hadash Beit Eliezer, Hadera



Development Continent, Mor Lerner Age 13 and Miriam Hawadi Age 13, School – Beit Ekshtein, Ofakim



So Close – So Far, Tamar Golan Age 9, School – Merchav, Sde Zvi

Participation in ICA Events

Membership and General Assemblies

The ICS is the representative in Israel that is responsible for paying the ICA membership fees, and therefore represents Israel at the ICA general assemblies with full voting rights. Since the last National Report, Israel has participated in all ICC's, including sending representatives to the General Assemblies in 2019 in Tokyo, Japan and 2023 in Cape Town, South Africa.

Judging for the Barbara Petchenik Children's' Map Competition

As Israel is a full member of the ICA, the ICS was also on the judging committee of the international competition in 2021 and 2023.

International Cartographic Exhibition

The ICS has taken active measures to ensure that Israel is represented at the ICE. This includes organizing and authorizing the material from all of the participants from Israel, the coordination with the local organizing committee and setup of the exhibition.

2021

International Cartographic Exhibition, ICC Florence, Italy

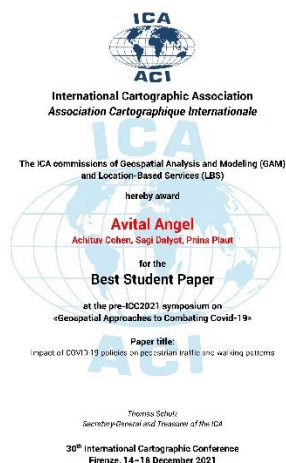
Maps

- *Unfortunately, due to post office issues in Italy during the Omicron/Covid-19 wave, Israeli maps that were sent by post didn't make it in time to the exhibition.*

Atlases

- *State of Israel, 70 Years of Statistics, Historical Statistical Atlas, 1948-2018*
- *The Truman Institute Atlas of the Jewish-Arab Conflict*

Israel's Achievements at ICC 2021, Florence Italy



Best Student Paper!



Barbara Petchenik
Children's Map
Competition (ages 9-12)
1st place!!!



International Cartographic
Exhibition, Atlas category
2nd place!!!

2023

International Cartographic Exhibition, ICC Cape Town, South Africa

Maps

- *Religions of Jerusalem – Central Bureau of Statistics*
- *State of Israel – Peripherality Index by Local Authority – Central Bureau of Statistics*
- *Israel -Topographic Map – Survey of Israel*
- *SINAI – THE HIGHEST MOUNTAIN - Trekking map - Santa Catarina And Jebel Mussa – Orgad Maps*

Atlases

- *The Lebanon War ("Peace of Galilee" Campaign), Maps and Operations, June-September 1982 - Israel Ministry of Defense – Publication House and the IDF (Israel Defense Forces) History Department*
- *BRAWER ATLAS – The New Israeli University Atlas - Yavneh Publishing House Ltd.*
- *BRAWER ATLAS – Israeli Schools Atlas - Yavneh Publishing House Ltd.*
- *Israeli Online Statistical Thematic Atlas – Central Bureau of Statistics*

Other Cartographic Products

- *The Israel National Trail - Field Map Compendium - Society for the Protection of Nature in Israel*

- *Israel's Hiking Trails Map Set - Survey of Israel; Society for the Protection of Nature in Israel*
- *World Map Ping Pong Ball*

Digital Service

- *GISrael Digital Mapping - MAPA – Mapping and Publishing*

ICS Contact information:



E-mail: isrcartogis@gmail.com



Website: <https://www.isrcartogis.org>



Facebook: <https://www.facebook.com/IsrCartoGIS/>



YouTube: <https://www.youtube.com/@isrcartogis/videos>



Linkedin: <https://www.linkedin.com/company/isrcartogis>

Address: Hebrew University in Jerusalem, Berman Building 105,
Edmond Safra Campus, Jerusalem 9190401

Governmental Agencies

Survey of Israel

Mr. Hagi Ronen, Director General

Mr. Basheer Haj-Yehia, Deputy Director General for Mapping and GIS

Mrs. Shirly Goldner, Head of Cartography Department

The British mandate of the League of Nations for Palestine founded the Survey Department in 1920 with the goal of establishing the geodetic infrastructure and surveying the land in order to implement the Torrance principle in the Cadastre. This was a major undertaking, and the initial efforts of the Survey Department to lay the groundwork for a modern government agency for Mapping, Geodesy, Cadastre, and Geoinformation, known today as the Survey of Israel (SOI).

Today, the SOI is responsible for the production of topographic and thematic maps, the provision of navigational services, and the establishment of geological, geodetic, and geophysical networks. It is also responsible for the research and development of new methods and technologies for mapping, geodesy, and cadaster, providing guidance and technical support to all government bodies in the field of mapping, geodesy, and geoinformation services.

The SOI has, become an integral part of the Government of Israel and is committed to providing the highest quality of mapping and geoinformation services.

The SOI consists of four different professional divisions:

1. Geodesy
2. Cadastre
3. Mapping and Geoinformatics
4. R&D

The Cartography Department of the Survey of Israel is responsible for creating mapping products for a variety of purposes. These include security, emergency services, environmental protection, tourism, construction infrastructures, and more. These mapping products come in a variety of scales, sizes, and formats, ranging from digital to paper products. The SOI maps are updated once a year and provide a comprehensive view of the country.

The Survey of Israel's cartographic department, with its expertise in cartography, geographic information systems, and publishing, has designed and developed an automated cartographic production system that produces high-quality up-to-date maps in various formats.

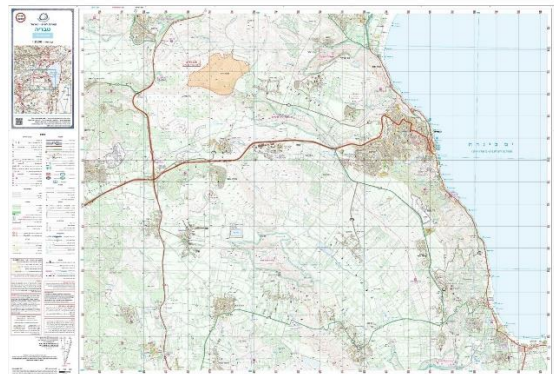
The SOI maps are a product of the National Topographic Database (NTDB) and the National Cadaster Database (NCDB). The NTDB contains topographic data that encompasses the whole state of Israel and that is revised once every 1-2 years.

Products

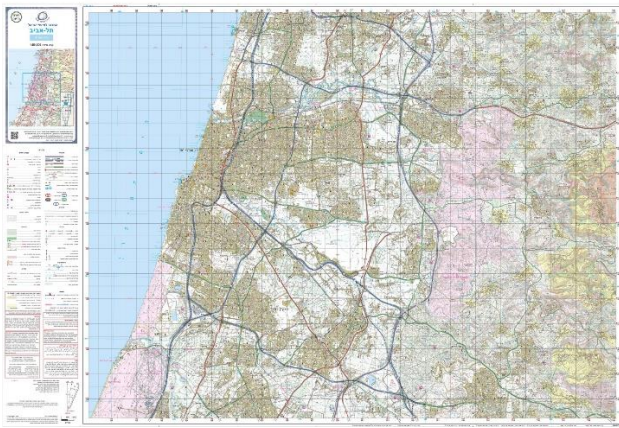
The map products are provided in hard copy (70cm X 100cm) and digitally in GeoPDF and GeoTIFF format. Map products are available in Israel TM grid projection and are updated annually. All maps are available in Hebrew and some are available in English, Arabic, and French.

1. Topographic maps at 1:25,000

Raster maps covering the entire State of Israel. The maps are a mosaic data set divided into 97 parts. They provide an excellent overview of specific locations on a 1:25,000 scale and are especially useful for hiking, land development and planning, asset management, environmental impact analysis, vehicle routing and more.

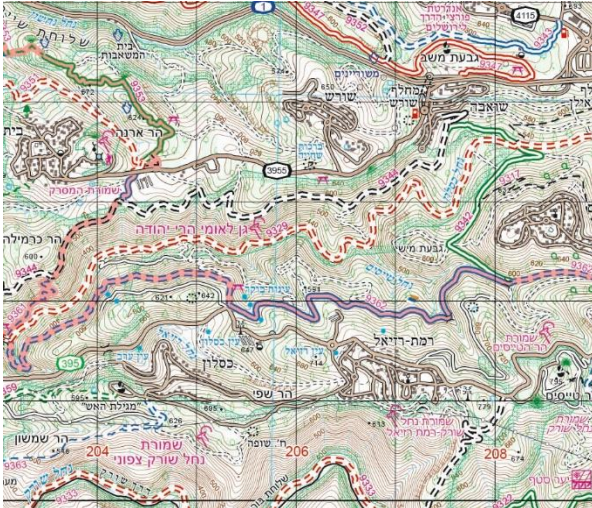


2. Topographic maps at 1:50,000



Raster maps covering the entire State of Israel. These maps are a mosaic data set divided into 28 parts. They provide an excellent overview of specific locations on a 1:50,000 scale and are especially useful for hiking, land development and planning, asset management, environmental impact analysis, vehicle routing and more. The maps are available in English and Hebrew.

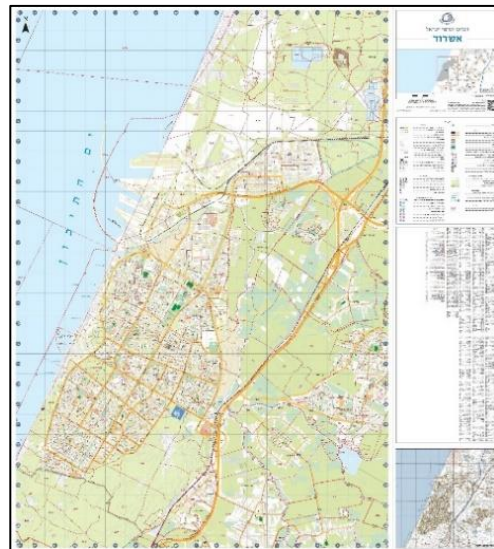
3. Hiking maps



Raster maps covering images of the entire State of Israel. These maps are a mosaic data set divided into 17 parts. They provide an excellent overview of specific locations on a 1:50,000 scale. These maps are the most popular hiking map in Israel produced as a joint venture with the Israel Trail Commission at the Society for the Protection of Nature in Israel

4. City maps

Raster maps on a scale of 1:2,500 - 1:15,000 covering all cities/ towns (big and small). They provide an excellent overview of the city and include a street index. Map themes: tourist maps in various languages including tourist interest points; Professional maps with Blocks



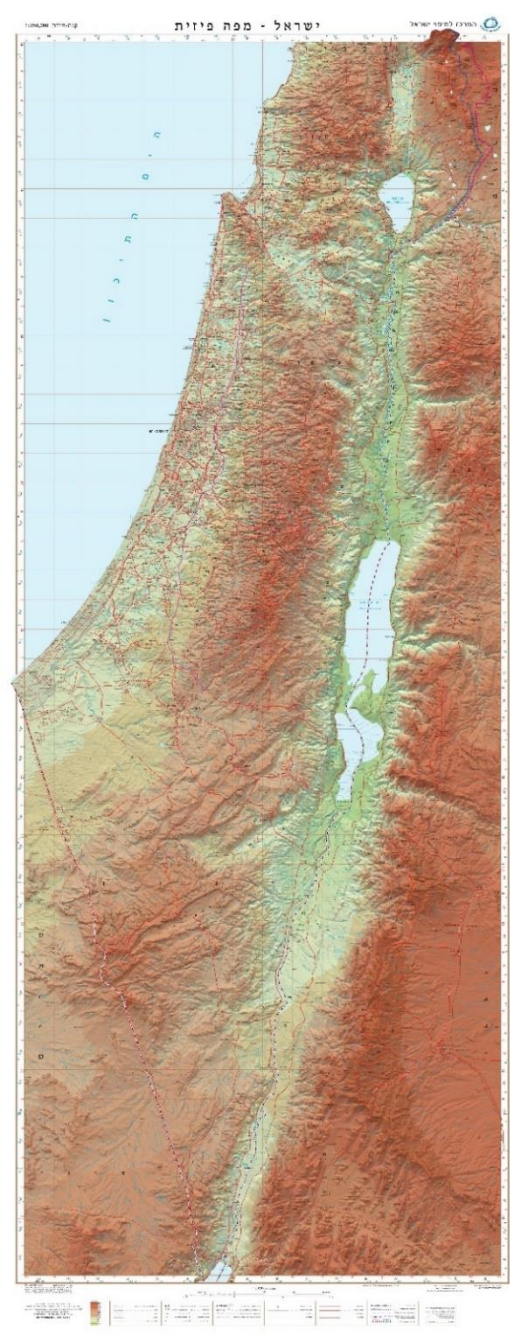
5. The old city of Jerusalem map

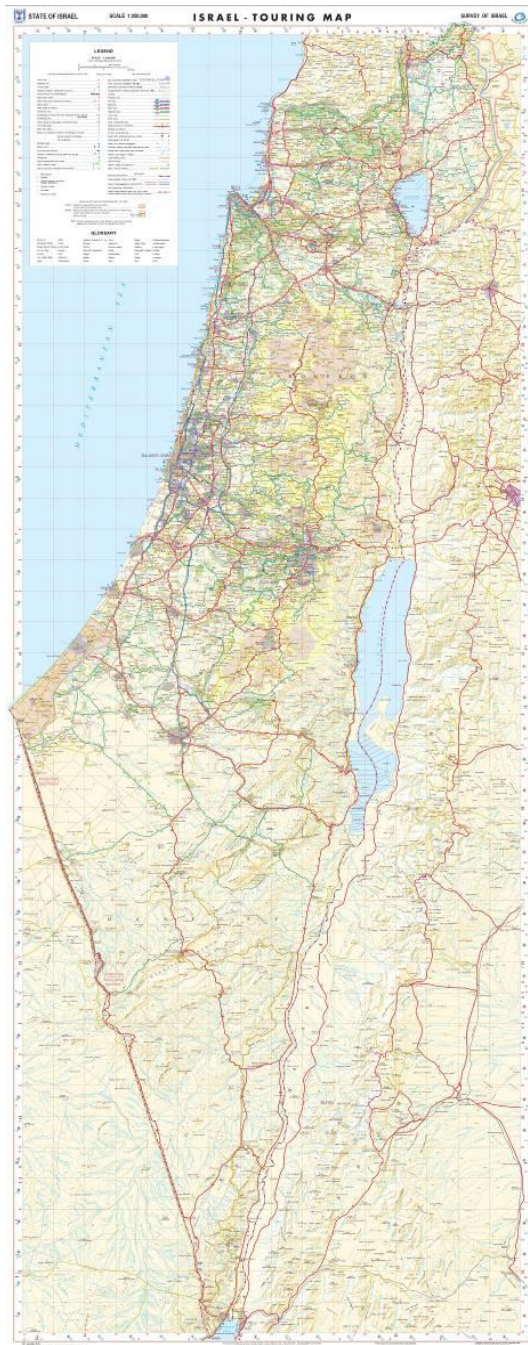


Raster map covering the old city of Jerusalem with an Ariel photograph inserted outside of the city walls. The map is available in English and Hebrew.

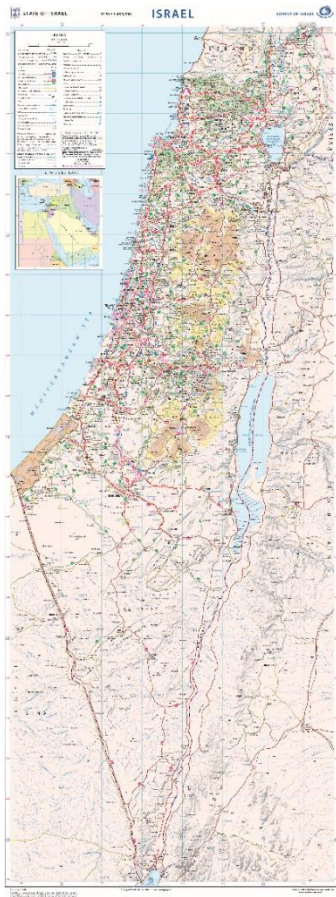
6. State of Israel at 1:250,000

Raster maps covering images from the entire State of Israel. The maps are published in two sheets: North and South (but could also be provided in one sheet). They provide an excellent overview on a 1: 250,000 scale showing roads and cities or as a physical map product. The maps are available in English and Hebrew. Map themes: Tourist maps, physical maps and road maps.

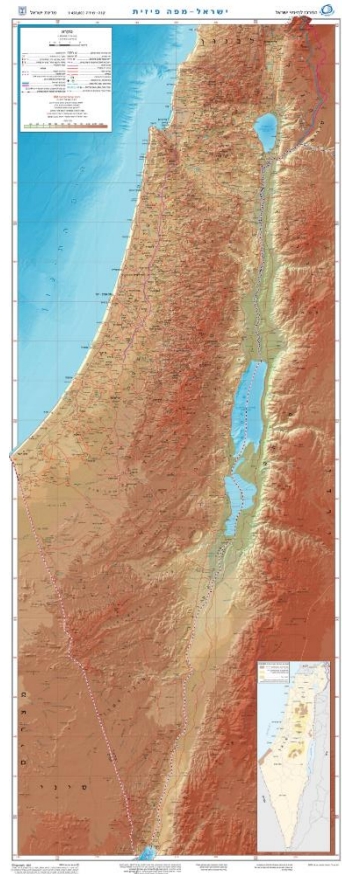




7. State of Israel at 1:450,000

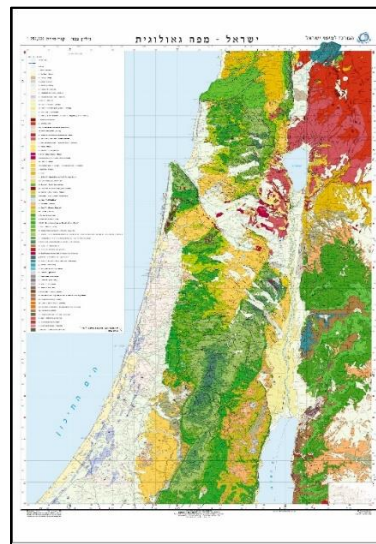


Raster map covering images of the entire State of Israel. The map provides an excellent overview on a 1: 400,000 scale. The map is available in Hebrew, English, Arabic, and French.

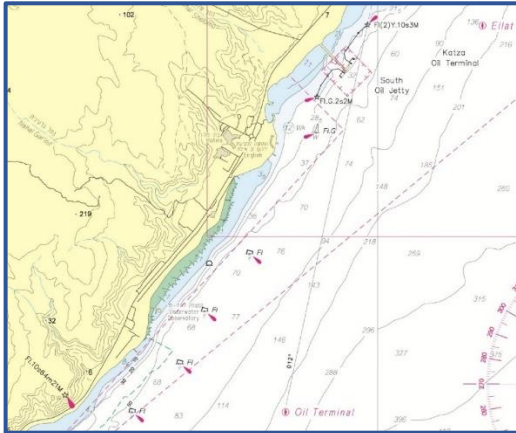


8. Geological map at 1:250,000

Raster maps covering images of the entire State of Israel. The maps present the surface geology of Israel, in two sheets: North and South. Rock formations are shown by name and geological period. The maps also includes faults and plutonic features. The geological information was provided by the Geological Survey of Israel (GSI).



9. Nautical charts



Paper and Electronic Charts (ENCs) covering the entire water bodies of the State of Israel including its vast Exclusive Economic Zone (EEZ). These maps are available at 1:3,000, 1:5,000, 1:10,000, 1:20,000, 1:22,000, 1:90,000, 1:250,000, and 1:350,000. They provide the information needed for small and large vessels sailing in and around our waters. The maps are available in English and Hebrew.

10. The National Map Archive of Israel

A library of 40,000 historical, antique and unique maps starting from the 16th century covering the State of Israel, the middle east and the world. The library maps are scanned and available in English and Hebrew.



Contact information

E-mail: mapinfo@mapi.gov.il

Website: <https://www.mapi.gov.il/en/Pages/default.aspx>

Telephone: +972-3-6231911

Fax: +972-3- 5610866

Address: Head office- 1 Lincoln St. Tel-Aviv PO Box 14171 postal code 61141, Israel



Profile

The Central Bureau of Statistics ([CBS](#)) was established several months after the establishment of the State of Israel, as an autonomous unit within the Prime Minister's Office. The establishment of the CBS was a direct continuation of the activities of the statistical departments of the British Mandate government, and the Jewish Agency for Israel which operated during the period of the Mandate.

Geography is expressed in statistics in the form of analysis and presentation of data related to human activities such as demography, agriculture, transportation, education, etc., and geophysical characteristics such as precipitation, topography and land use. The findings are distributed as a table, chart, or uniquely as a GIS layer or map. The geographical aspect of the CBS data using GIS enables a unique analysis at different spatial levels - from the state and the district level to the city level and the statistical area, and enables the identification, analysis and presentation of unique spatial connections between different phenomena.

[The Geography-GIS Sector](#) is responsible for producing GIS and other geographical products. The sector supplies a vast digitized spatial infrastructure database and geocoding services for the Bureau's needs such as census, services for the different units in the Bureau and service to external clients.

The GIS Sector helps transform databased into maps for publications, to help analyze the data and give it its unique geographical context. These products include thematic maps which present the spatial distribution of demographic, social, and economic statistics. The maps are designed to provide a general perspective of the phenomenon being presented, from national distribution to the smallest geographic and administrative divisions. The maps provide illustrations of the statistical data at all of these levels and are thus a useful tool for the CBS's broad target audience, which includes researchers, university students, pupils, and the public at large.

The CBS's statistical maps make use of uniform templates and cartographic-statistical methods. Most of the maps are available at no cost through the CBS website.

Online Thematic Atlas

This [web page](#) contains all of the maps that are published by the CBS. The Atlas is divided into topics and then by the year of the data. This enables the public to easily view the entire inventory of thematic maps.



Map data is available as spreadsheets. All the maps are available for free download as PDF files.

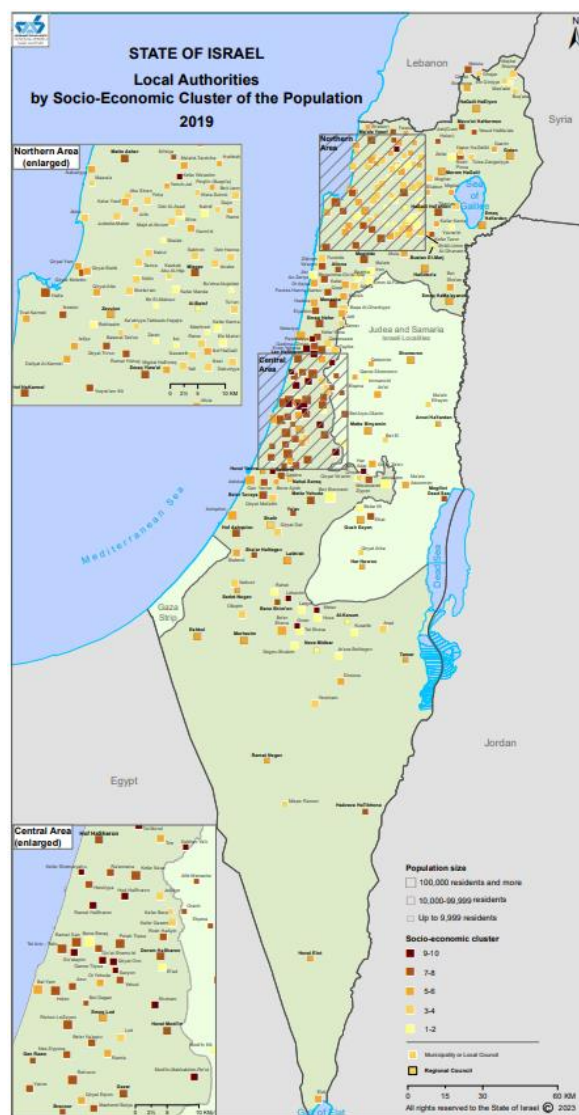
Statistical Abstract of Israel -

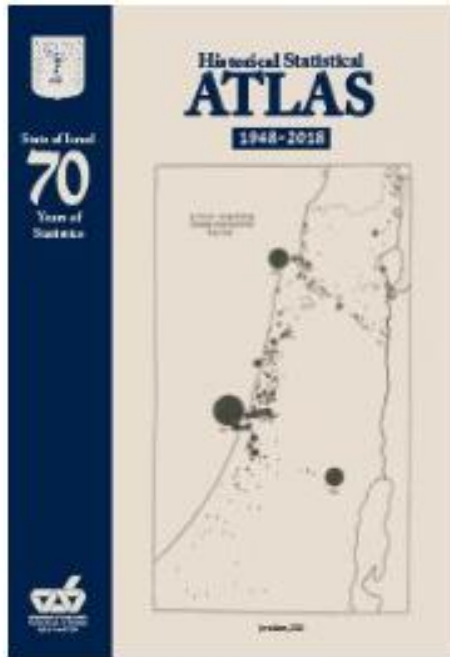
Map Section

The CBS's flag publication holds a unique map section with about 55 statistical maps of Israel, ranging a wide variety of topics such as demography and households, health, education, environment, welfare, geophysical characteristics etc., matching most of the thematic chapters of the abstract itself. This map series uses an identical template with changing data.

All maps are published online in PDF format, and are accompanied with an excel spreadsheet that contains the map data. Downloading the maps and data is free of charge.

The map section is updated annually on the Jewish New Year in separate Hebrew and English versions. The section will be translated also into Arabic by the end of 2023.





State of Israel, 70 Years of Statistics,
Historical Statistical Atlas, 1948-2018

Historical Statistical Atlas

The CBS published a Historical statistical Atlas in celebration of Israel's 70th year of independence. The Atlas portrays 70 Years of Statistics, based on National Censuses. The Atlas was printed in hard cover (172 pages, 2 editions, 2,000 copies) and is available as a PDF file on the [CBS Geography web page](#).

The atlas was presented at the International Cartographic Exhibition in Florence, Italy 2021, and **won 2nd place in the atlas category**.



Land Use Maps

The CBS has updated its land use mapping to 2021.

A series of maps on the National, District and Local Authority levels were produced.

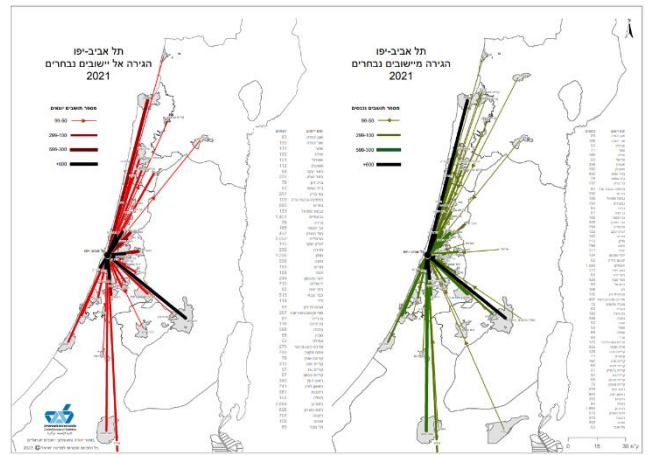
These maps are based on a nationwide project of land use mapping, conducted by the CBS every 5 years. The maps use the same categorization as the maps from the last update, so comparisons are possible.

Immigration maps

This set of maps shows the flow of internal national incoming and outgoing change of residence to and from major cities in Israel.

These maps are published every year with up to date in the "Local Authorities" publication.

The maps use the same category breaks each year, so comparisons between the cities and between the years is possible.



Immigration to and from Tel Aviv-Yafo.

Geographic Products Catalog

The Geography-GIS sector maintains a geographical product [catalog](#), listing all of the geographic products that are available to the public, such as GIS layers, Maps, relevant key tables and more.

The catalog is arranged by topic, and then by the year of the data in the publication. Each item has a code so the Bureau's information desk can assist in tracking down the right product for every need.

Contact information

E-mail: info@cbs.gov.il

Website: <https://www.cbs.gov.il/EN/Pages/default.aspx>

Telephone: +972-2-6592666

Fax: +972-2-6521340

Address: Central Bureau of Statistics, 66 Kanfei Nesharim St., P.O box 34525, Jerusalem 9546456, Israel

Map Libraries and Collections

Forum for Map Collections in Israel

The Map Collection Forum was gathered by Prof. Reihav Rubin of the Hebrew University in Jerusalem, an expert on antique maps of the Holy Land.

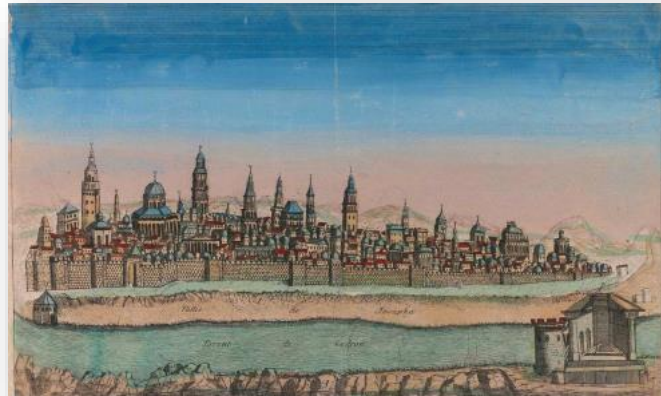
The ultimate goal is to create a virtual national map archive that will be open to the public on the network. The archive will not harm the autonomy of any of the collections, but will allow cooperation and, above all, will open the map collections to the general public in Israel and beyond.

Institutions who took part in the Forum's meetings:

- National Library, Jerusalem
- Israel Museum, Jerusalem
- Yad Ben Tzvi Institute, Jerusalem
- Tel Hai Historic Cartographic Center, Tel Hai
- Tel Aviv University, Tel Aviv-Yafo
- Hebrew University in Jerusalem
- Naval Museum, Haifa
- Zionist Archive, Jerusalem
- Survey of Israel, Tel Aviv-Yafo
- Central Bureau of Statistics, Jerusalem
- IDF Archive
- Private collectors

<https://isrcartogis.wixsite.com/isrcartogis/blank-10>

The Eran Laor Cartographic Collection is a physical and virtual collection of maps. The heart of the collection comprises ancient maps, atlases and travel books to the Holy Land and as such, it is the largest of its kind in the world. The collection also includes maps and atlases of other locations. In addition, the collection includes scientific literature on the Holy Land, studies about the historical geography of the Holy Land, Bible dictionaries, and copies of early Bibles that feature maps.



The main part of the collection is the maps which were donated to the library by the late Eran Laor. Most of the map collection is available through the library website. Additional maps from the collection are posted to the site on an ongoing basis. As part of its undertaking to create a digitized resource for Holy Land maps, the National Library is now working to expand the digitized collection with the goal of bringing together many additional maps of the Holy Land that are not part of the collection but exist in other libraries and collections, thus creating a comprehensive collection of maps of the Holy Land.

The Physical Collection

Most of the items in the collection were donated by the late Eran Laor in 1975. Together with Shoshana Klein, Laor compiled a catalog of the map collection entitled *Maps of the Holy Land: "Cartobibliography of Printed Maps, 1475-1900"*, published in New York in 1986. The heart of the collection includes 1500 ancient maps of Jerusalem and the Holy Land, alongside ancient maps of other parts of the world. The collection also includes surveyor maps of Eretz Israel beginning in the mid-19th century, as well as modern maps of Israel, cities in Israel, and neighboring countries prior to the establishment of the State and to this day. The maps in the collection are in various European languages, as well as in Hebrew, Yiddish and



Arabic. In addition, the collection includes companion works on the history of cartography, as well as academic journals and reference books.

All of the maps in the collection are cataloged on-line. In addition, the bibliographic entries for the ancient maps of the Holy Land and Jerusalem, as well as for all of the other scanned maps, include a link that enables direct access to the map. The collection serves as a leading resource for students and scholars in the disciplines of ancient and modern cartography, as well as in other realms, including historical geography, general history, art history, Jewish history, the history of Israel and the Diaspora, architecture, urban planning, and Jerusalem studies. Among those who make use of the collection are scholars, curators, students and visitors from Israel and around the world.

Contact information

E-mail: Ayelet.Rubin@nli.org.il

Website: <http://web.nli.org.il/sites/nlis/en/Maps/Pages/About.aspx>

Address: The National Library of Israel, Edmond J. Safra Campus, Givat Ram, POB 39105 Jerusalem, Israel

Bloomfield Library for the Humanities and Social Sciences - Map Department at the Hebrew University in Jerusalem



History

The map collection of Bloomfield Library for the Humanities and Social sciences originated in the Geography Department Library. Prof. David Amiran, the founder of the department, began collecting the first maps. Over the years the collection was enriched by faculty, students and donors from near and far. With the move to Mount Scopus in 1982, the departmental libraries were joined together in one central library, the Bloomfield Library for the Humanities and Social Sciences. In this process, the geography library books were transferred to the central library, but the map library collection was placed close to the Geography Department. Only a few years ago, the collection was relocated into the central library building and became the Map Department.



Content

The Map Department has a collection consisting of ca. 70,000 maps, of which approximately 16,000 are cataloged in the online catalog, and some 5,500 are scanned and available for viewing in the library catalog. The cataloging and scanning are ongoing projects. The department has a big format scanner and does in-house scanning of its maps, provided they are out of copyright.

In addition, the Map Department houses atlases (ca. 350), wall maps (ca.680), aerial photographs (ca.50,000, of which ca.14,000 are uploaded to the library catalog), and a stand-alone scanned collection of ca.8000 Jewish National Fund maps, available to researchers only.

The department owns two plaster relief maps. One is a relief of the Old City of Jerusalem and surroundings, made by Ch. Muret in 1885. The other is a relief map of the Land of Israel, made by Zalman Lifshitz on the scale of 1:250,000.



Projects

Scanning and cataloging more maps and aerial photographs are some of the ongoing projects, keeping the Map Department busy.

In a special joint project, the Geography Department of the Hebrew University, together with the Map Department, is developing a visual, geospatial search engine in which it will be possible to search for cataloged maps, aerial photographs, and other collections with a geospatial aspect.

Maps of the Land of Israel

The focus of the collection is the Land of Israel and surrounding area, and it mainly contains surveyed, measured maps. The map of Napoleon's campaign to Egypt and Syria, in 1799, forms the chronological starting point of the collection.



It includes the Ordnance Survey maps of Jerusalem in 1864/65, the complete series of Palestine in 1880 by the Palestine Exploration Fund, and other maps of explorers and surveyors from the end of the 19th century and the beginning of the 20th century.

The collection has important British and German military map series of the area in the First World War.

The focal point of the collection is an extensive collection of maps of the British Mandate Era, created by the Survey of Palestine, and other agencies and private persons. A substantial portion of the maps belongs to a systematic survey series begun during the period of the Mandate. Included are a comprehensive map series on a 1:100,000 scale commencing in the 1930s and updated several times; a detailed series of topo-cadastral maps on a 1:20,000 scale, begun in the 1930s and updated until the end of the 1950s; and urban maps of the larger cities - Jerusalem, Tel Aviv-Jaffa, and Haifa in great detail, some of them on a scale of 1:1250. Smaller cities too were mapped in detail by the Mandate government: the collection has maps of villages and small settlements on scales between 1:4000 and 1:600.



Many detailed maps depict houses, courtyards, wells, the function of structures and use of the land. They are an important instrument to study the development and settlement of the Land of Israel in the time of the British Mandate.

In the early days of the State of Israel, from 1948 on, Mandate-era maps continued to be printed and updated incorporating changes in settlements and roads. Later updates were published by the Survey of Israel. The topographical 1:20,000 scale series was terminated in the 1960s and maps began to be produced on a 1:50,000 scale, augmented by the 1:100,000 topographical series. The comparison of maps from

different periods enables researchers to analyze the development of the country and its settlement.

As well as the map series, the collection includes numerous individual maps from general maps to more detailed varieties such as: urban maps, topical settlement maps, thematic maps, geographical maps, and geological maps.

Maps of other areas

The collection has a large number of maps of other areas of the world. It includes topographic as well as thematic and geological maps of larger and smaller geographical areas. It has coverage of the whole world in global and regional maps, as well as maps of countries, detailed map series, and city maps. Many of them are from the first half of the 20th century. They include maps of the world on a 1:1,000,000 scale, map series of many countries in Europe, the Middle East, Africa and Asia, and to some extent of North America, as well as maps of major cities in Europe and other areas.



Atlases

The library has a wide range of world atlases. The oldest ones were published at the end of the 19th century and offer a look into a world that has all but disappeared, especially their pages with maps of the East of Europe. In addition, it has many other atlases from a variety of publishers and in a variety of languages: regional atlases, national atlases of different countries and topical atlases: economic, historical, and more.

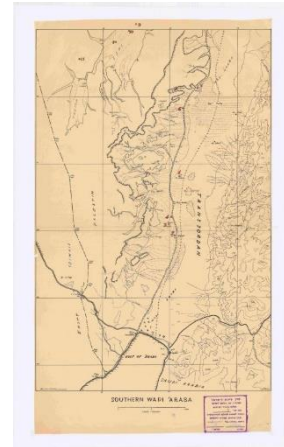
Wall Maps

The collection contains historical, physical, topographical, and political wall maps on a wide range of subjects. 259 of the wall maps were designed and hand crafted by cartographers in the Department of Geography for specific course use. They have been scanned and are available for viewing and download in the library catalog.



Scanned maps of the Jewish National Fund

This unique collection is the property of the JNF and has been deposited in the Hebrew University for the purposes of study and research. The library has prepared a detailed catalog of the collection which consists of hand-drawn, archival documents. Most of the maps were prepared by the JNF for its work in purchasing land and preparing it for settlement and regional development. The archive has nurtured a steady stream of articles, research papers and numerous books. As the JNF maps are rare documents, they are at the disposal of researchers and advanced research students only. They can be viewed digitally with help of the staff in the Map Department only.



Aerial photographs (about 50,000)

The library received a donation of 34,000 aerial photographs of the first decades of the State of Israel. The photographs were made by the Photogrammetric Institute in Jerusalem and donated by the Leef family in the name of Nimrod Leef (son of Zalman Lifshitz), the director of the Institute. In addition, more than 14,000 aerial photographs from the first half of the 20th century of Ottoman and British Mandate Palestine, provided by the Geography Department, have been uploaded to the library catalog. The collection is soon to be enriched by more aerial photographs collected by the Geography Department of the Hebrew University.



Contact information

Map Librarian: Krina Doekes Brandt

E-mail: krinad@savion.huji.ac.il

Website: <https://en.mslib.huji.ac.il/book/map-library>

Address: The Map Department is located in the Bloomfield library, Mt. Scopus Campus, Jerusalem 9190501.

Telephone: 02-5880170

The Geography Department of the Hebrew University



Why Study Geography?

Studying Geography at the Hebrew University will equip you with a broad and integrative view of the human and physical processes that fashion our environment. You will be exposed to **Urban and Economic Geography, Historical and Cultural Geography, Physical and Environmental Geography, Transportation, Tourism, Cartography, Remote Sensing, GIS and Geoinformatics**. A grounding in geographical and spatial skills presents many employment opportunities in the fields of **urban planning, environmental and resource management, transportation planning and management, spatial analytics and geoinformatics, social and community planning and education**.

The Geography Department at the Hebrew University combines lectures, group project assignments, clinics and lab classes, field work, site study visits and study tours abroad in a stimulating scientific environment. The first year of study is devoted to introductory mandatory courses and in subsequent years each student complies their own combination of elective and methodological courses. We offer a **Geoinformatics track** option to outstanding students from the second year onwards. This provides the theoretical, technical, and applied tools for spatial data analysis and geo-computational skills.

Some of the available courses: Geoinformatics, Programming in Python, Introduction to statistics A & B, SQL databases for Geography, Workshop in Raster GIS, Urban and regional analysis - GIS applications, Introduction to geospatial data science, GIS applications for conservation planning, Network analysis, Dynamic mapping and spatial data visualization, Introduction to remote sensing & image process, Workshop in Geoinformatics, Foundations of spatial statistics, Advanced Remote sensing, Urban Simulation, Analyzing Human Spatial Activity using Digital data, Social Aspects of GIS.

Contact information

Website: geography@savion.huji.ac.il



The library of the Department of Geography is a sub library of The Neiman Library of Exact Sciences and Engineering and its collections include around 10,000 books and approximately 300 journals in the fields of geography, atlas, aerial photos, historical images and more.

The Micha Granot maps library is part of the library and contains one of the biggest maps and aerial photos collections in Israel.

The library caters to students and faculty and gives reference services to the public.

The maps library includes the following collections:

- **Land of Israel maps**

Maps from the end of the 19th century up until today.
Scale 1:2,500 to 1:500,000.

- **City maps**

Street names, institutions, parks, public transit, tourism sites. Israeli cities maps. A large collection of maps of Tel-Aviv-Jaffa (end of the 19th century up until today), Maps of Haifa and Jerusalem. Maps of other cities.

- **Villages and towns maps**

The collection includes maps of Arab villages from the period of the British Mandate.

Town maps (towns, kibbutzim) and mainly maps of land use are all in folders in room 208.

- **Wall maps**

Location: On the walls around the library.

- **Maps collection PEF from 1880.** The library also has scanned photos of these maps.

- **German maps from WWI**
- **Madaba and Jacotin maps (copies)**
- **Copies of ancient European maps**

- **Arab maps**

Includes maps that were looted in the Yom Kippur War. Donated by colonel Israel Granit: maps in Arabic mainly of Egypt and Sinai.

- **Other maps**

Include Geological maps, Cadastre maps, Maps of land, Tourism and hiking maps, Bathymetric charts And Administrative maps.

- **The Moshe Brawer Atlas Collection**

A recent addition to our library – Prof. Brawer donated his entire private atlas collection, for future generations to see.



Contact information

Library manager: Neta Gindi-Sivan

E-mail: geogmaps@tauex.tau.ac.il

Website: <https://scilib.tau.ac.il/geolib-main>

Address: "Yad Avner" building. The faculty of geography and human environment, floor 2, room 233, Zelig Street 10, Afeka, Tel Aviv.

Phone: +972-3-6409044

Younes & Soraya Nazarian Library Map Collection - University of Haifa



The map collection includes flat maps, wall maps, satellite photographs, aerial photographs, charts, atlases, globes and digital collections.

Loans: Most maps are loaned for 2 weeks.

Digital Collections in the Library's Digital Media Center:

The [collection](#) includes images and maps in the areas of physical geography, human geography, environmental studies and Israeli geography.

The [Aerial Photos](#) of Israel 1917-1919 is a collection photographed by German pilots who fought alongside the Turks in World War I and were the first to document Israel's landscape from the air. The photos were useful tools for mapping Israel and its cities.

Contact information

Librarian: Hadas Atikai

E-mail: hadas@univ.haifa.ac.il

Website: <http://lib.haifa.ac.il/index.php/en/projects-collections-eng/about-coll-eng/maps-eng>

Tel. 972-4-8240264

Address: 199 Aba Khoushy Ave., Mt. Carmel, Haifa 3498838

Tel Hai Historical Map Archive- Tel Hai Academic College

The Tel Hai Historical Map Archive in the Tel Hai Academic College is expanding with new fascinating collections of maps from different periods. The extensive archive is located in the new library in the eastern campus, and holds over 20,000 maps, out of which 2,600 are scanned and key coded. The maps describe various topics related to the history of the land in the last 120 years, with an emphasis on the Upper Galilee region where the college is located. The beginning of the collection is a donation from Mr. Eitan Israeli from Kibbutz Amir. Since, the collection has expanded. Many maps were donated by private people or other bodies. Some of this material is unique and doesn't exist anywhere else in the world.

Among new collection additions is the Storman House Museum map collection, portraying the Jewish migration to the area in the mid 20's to 60's of the 20th century.

Another collection is enemy maps that describe the wars in the area from their perspective.

Digital archive

Based on the concept that maps should serve for documentation and research, each map is scanned in high resolution, key coded and catalogued. Recently, an information system was implemented, allowing the showcase of geographic layers with maps and aerial photos in the background with a time slider.

The digital map collection serves as a research tool for researches in Israel and around the world.

Contact information

Library manager: Dr. Alon Margalit

Map archive manager- Shalom Termichi

E-mail: shalomt@telhai.ac.il

Website: <http://moodle.telhai.ac.il/>

Address: Tel Hai Academic College, Library, DN Upper Galilee 122008

Telephone: Eastern campus- +972-4-8181920

Yad Izhak Ben-Zvi Map Archive



Yad Izhak Ben-Zvi, established in 1969, is an institution commemorating Izhak Ben-Zvi, the second president of Israel. It is devoted to research and education in two areas: the history of Eretz Israel, and of the Jewish communities in the East. The institution also maintains an academic publishing house, a bookstore, and a school that provides training, courses, and educational programs.

Another unit deals with curation and visual documentation. Yad Ben-Zvi also has a library and map and photo archives. The map archive holds about 6000 maps. These include mainly series from the Mandate period and from the period of the State of Israel on scales 1: 20,000 – 1: 100,000. However, there are also historical maps, maps of localities and regions, thematic maps (transportation, tourism, etc.), as well as archaeological maps and plans. We also maintain a copy of the Palestine Exploration Fund maps (ca. 1878).

A separate collection includes maps that were used for land survey and parcellation, most relating to Jerusalem and its environs, maps of Jerusalem on scales 1: 2000 – 1: 1250, and maps of other settlements. The map collection is recorded in an Excel file, most of it is not yet digitized and is not accessible on the library's website or in its catalog. The library holds a large collection of books focusing on the historical geography of the Land of Israel and Jerusalem.

Annexed to the library is a digitized photo archive. More than 100,000 photographs from the Land of Israel and the Jewish communities are available on the archive's website (www.israelalbum.org.il). The archive site is now being upgraded and will also provide the ability to select images by geographic region (and not just through a textual search). Another project is the "tour guides" website which will make accessible photo collections and documents from trips conducted by tour guides who were active in the Land of Israel and its surroundings in the twentieth century.

Contact information

E-mail: Library@ybz.org.il

Website: <https://www.ybz.org.il/lib>

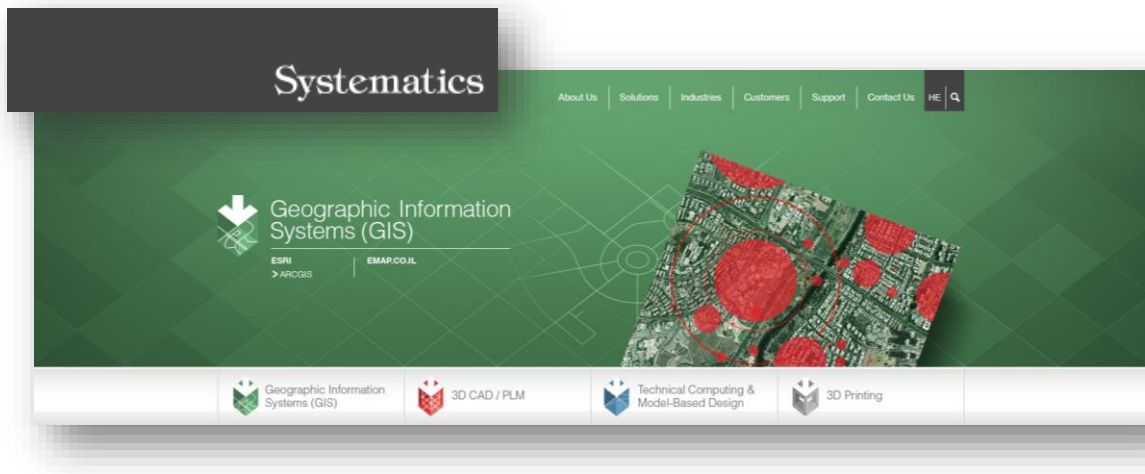
Address: 14 Ibn Gabirol, POB 7660, Jerusalem 9107601, Israel

Telephone: +972-2-5398888

Fax: +972-2-5638310

Private Sector

Systematics Technologies R.G. LTD



Systematics is the sole distributor of Esri in Israel. We are supporting more than 1,000 organizations in Israel in implementing GIS systems, and help them with their cartographic needs.

Systematics' GIS solutions enable the adding and integration of the spatial dimension in corporate information systems, supporting organizational workflows and enhancing decision making.

Systematics provides support, implementation services and training, as well as guidance, consulting and application development services for using GIS throughout the organization.

Systematics represents a large number of spatial data suppliers (vector and raster maps, orthophoto, satellite imagery, etc.) and offers processing services and the supply of geographic information from around the world.

Systematics' solutions have been implemented in Israel in most government ministries, in local authorities, in the military, defense, and homeland security sectors, in communication and infrastructure companies, and in the business sector.

Contact information

E-mail: yossil@systematics.co.il

Website: <https://www.systematics.co.il/>

Address: 4 Raoul Wallenberg Street, Tel Aviv 6971904

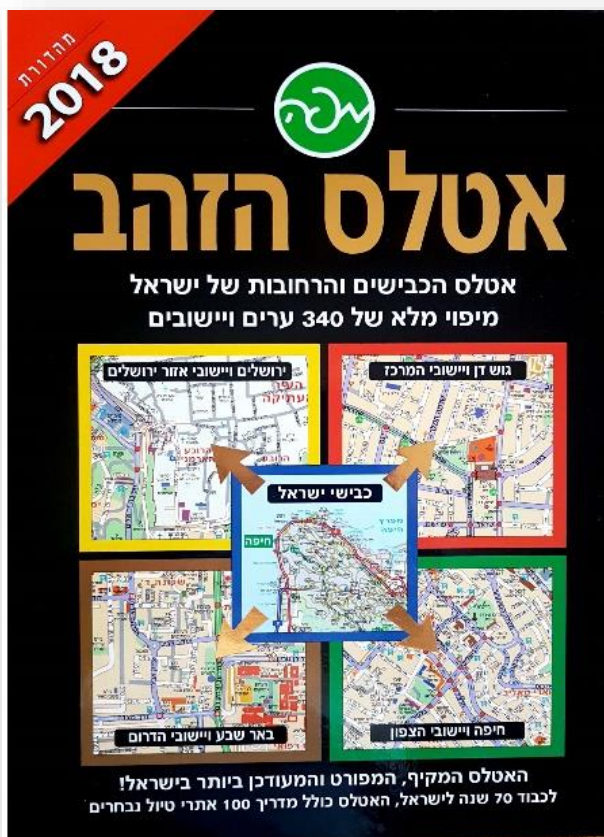
Telephone: +972-3-7660111

Fax: +972-3-7660120



MAPA is one of the largest and most dynamic publishing houses in Israel as well as an exceptional content provider for geographic GEO database named GISrael.

Some of the products:

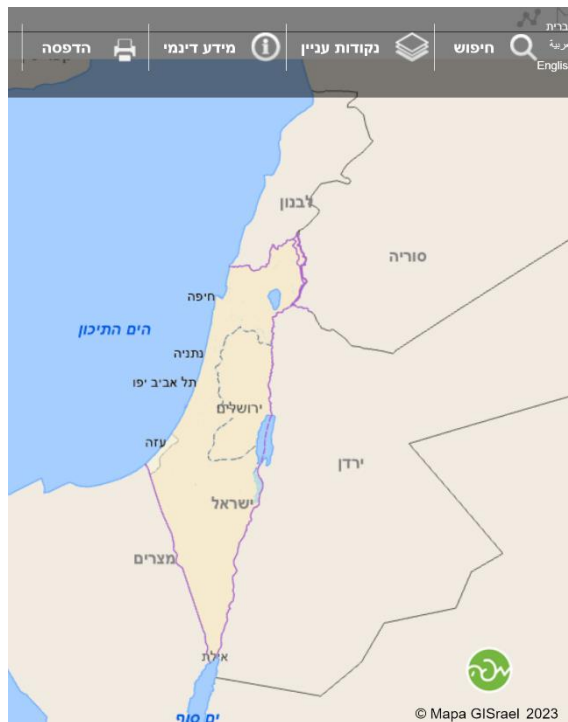
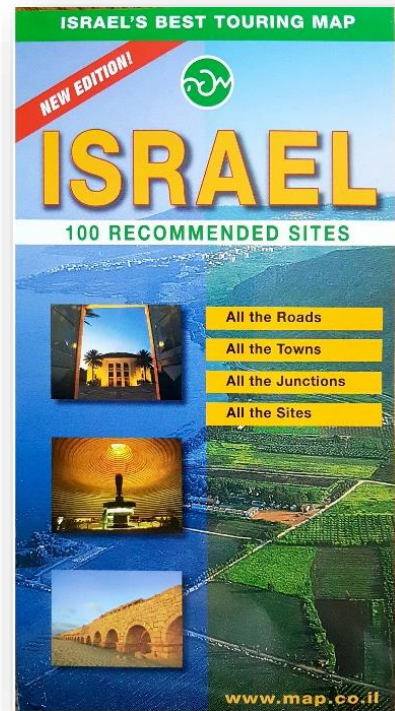


The Gold Atlas - the most detailed and extensive atlas of Israel and its cities. For Israel's 70th year of independence, the atlas includes a guide to 100 selected top touring spots. The Gold Atlas contains an atlas of Israel's roads full mapping of 340 cities and localities. In addition to street names, culture institutes, shopping malls, parking lots, road directionality and more, the atlas contain traffic lights and their codes and gas stations by operator.

Presented at the International Cartographic Exhibition, ICC Tokyo 2019.

Israel Touring Map in English contains 100 selected tour spots, pointed out uniquely, with all roads, cities and important sites such as nature reserves, national parks, attractions for children, historical sites, sacred places and sites you can't miss- all accompanied by an index.

Presented at the International Cartographic Exhibition, ICC Tokyo 2019.



GISrael Geo server

Updated quarterly and published through web services such as:

- Geocode
- Reverse geocode
- Routing
- POI's





GISrael ADRESES

GISrael geo database contains and maintains the most up to date address point location

The data is being established through on going field surveys. It is commonly used.



www.map.co.il



www.gisrael.co.il



<https://www.linkedin.com/company/mapa---mapping-and-publishing>



Contact information

E-mail: info@map.co.il, ofer@map.co.il

Website: www.map.co.il
<http://www.gisrael.co.il/homepage/>

Telefax: +972-3-5257725

Address: 29 HaMetsuda St., Azur, Israel



Shvilnet LTD is a Field Data company specializing in Field surveys, production and publishing of maps and digital products. The company specializes in publishing printed and digital topographic maps for hikers, bicycle riders and field drivers. The digital maps are sold within Navigation apps for IOS, ANDROID, WINDOWS operating systems and in TwoNav navigation devices and others.

The company engages in the initiation, management, and execution of mapping projects for local councils, organizations, and companies. Shvilnet has been collecting quality and unique data from the field for years, and sells vector and raster Data to commercial, private, and public organizations. Shvilnet data has a high added value comparing to existing alternatives in the market, manufacturing the best digital terrain maps and Data in Israel.

Contact information

E-mail: contact@shvilnet.net

Website: <http://www.shvilnet.net/>

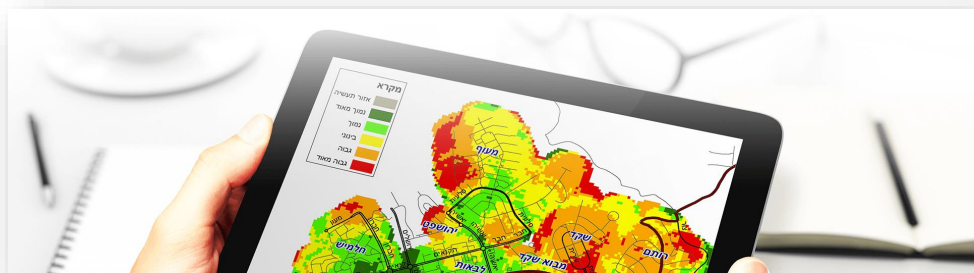
Telefax: +972-4-8311177



GEOCARTOGRAPHY knowledge Group is a unique research institute that aims to provide its clients with comprehensive tailor-made solutions, using advanced and unconventional research tools and models that provide practical knowledge and insights.

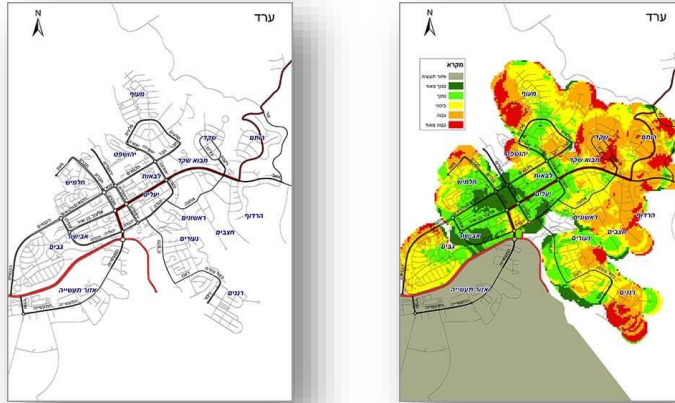
The company is headed by Prof. Avi Degani and Dr. Rina Degani, along with a professional and skilled team of senior researchers with academic degrees from various fields, which enables us to reflect the company's expertise and professional uniqueness, and emphasize its ability to integrate diverse areas of expertise.

Geo-analytical mapping



Analytical mapping is a method that uses geo-statistical and mathematical models to analyze the intensity of studied phenomena in relation to where they occur, and to translate the research findings to a visual level.

The AVISYS method applies the “theory of free space,” which argues that space should not be arbitrarily divided, but rather as a dependence of the phenomenon under study, when division is, in fact, one of the products of the analysis process.



Geokg uses extensive analytical mapping capabilities in connection with strategic work to examine economic feasibility and market potential, and to make decisions on optimal location selection from various perspectives. For example:

- Where to establish a new logistics center of a company, creating maximum savings in shipping costs
- Where to build a public institution to serve the city's residents
- How to plan the distribution of the branches, in connection with the potential existing in different areas while avoiding cannibalization
- Where to distribute newspapers to reach maximum exposure

Contact information

E-mail: avidegani@geokg.com

Website: <https://www.geokg.com/en/>

Telephone: +972-3-7682222

Fax: +972-3-7682223

Address: 154 Menachem Begin Rd., Tel-Aviv, Israel.



In a rapidly evolving technological age, Ofek Aerial Photography maintains its strategy of investing in the newest available infrastructure technologies to offer the most advanced and high-quality products and services in the market. With over 30 years of experience, Ofek has established itself as one of the leading companies in Europe specializing in aerial and satellite mapping, geographic data creation, collection, and processing. We excel in providing services for various geographic applications and projects, including NSDI, land management, Geoportals, infrastructure and agriculture monitoring systems, corridor mapping and flooding analysis among others.

The Ofek team consists of 120 professionals who specialize in different fields, such as forestry, GIS, NSDI, geodesic engineering, programming, interpretation, database design, analysis, cartography, geography, field surveying, mobile system operation, image interpretation, GIS specialization, piloting, navigation, and marine surveying.

Ofek has a longstanding worldwide track record of successfully completing projects in numerous countries, including Sao Tome and Principe, Ghana, Zambia, Uganda, Burkina Faso, Ethiopia, South Sudan, Angola, Azerbaijan, Romania, Greece, Cyprus, Germany, the UK, Spain, Georgia, Kazakhstan, the USA, Costa Rica, Honduras, and more.

What we do



Aerial Photography



Satellite Imagery



LiDAR



3D Modeling



Photogrammetric Mapping



Measurements



GIS



Geographic Surveys

With three state-of-the-art aerial photography aircraft equipped with advanced aerial survey sensors, Ofek is unique in its ability to serve as a single source for both geographic data collection and geographic information systems integration.

View Jerusalem in 3D - <https://www.ofek-air.com/en/services/3d-modeling/>

Contact information

E-mail: ofek@ofek-air.com

Website: <https://www.ofek-air.com/en/home-page/>

Tel: +972-72-3975333

Fax: +972-9-8650086

Address: HaBonim 22, Netanya, Israel



Simplex 3D is a technology company providing professionals in the urban planning & real-estate sectors, with a high-resolution, 3D web-based workspace to plan, analyze and manage projects and assets.



We have engineered a user-friendly Software-as-a-Service (SaaS) platform, allowing users to explore, plan and collaborate with colleagues and stakeholders on the highest-resolution 3D model of the project and its surrounding context.

Infused with rich, multilayered data, such as zoning, transportation, demographics, and more, and the ability to seamlessly integrate with additional third-party data, Simplex platform serves as a comprehensive, unified information hub providing different perspectives in a single glance.

Through Simplex 3D workspace, you can easily gain a complete understanding of your current reality, upload and manage data layers, take accurate measurements, conduct lines-of-sight or shadow analysis.

Hundreds of municipalities, architects, and real estate companies are already using Simplex powerful tools to utilize photorealistic visualization of current and planned surroundings in minutes, predict the future impact of your actions, and get everyone on the same page so you can move toward your new reality faster and more confidently than ever.

Contact information

E-mail: info@simplex-mapping.com

Website: <https://www.simplex-mapping.com/>

Address: 71 Hanadiv St. 2nd Floor, Herzliya, Israel, 4648583

Tel: +972-72-2555234

Fax: +972-72-2510009

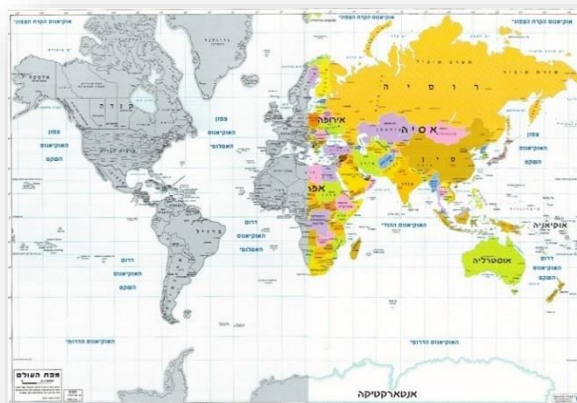
Avigdor Orgad Maps

"Avigdor Orgad Maps" is run by Avigdor Orgad, a professional cartographer, MA of the Geography Department at Tel Aviv University, with over 30 years of experience in map and globes production and editing.

Avigdor's' maps are sold in his unique map store, selling cartographic products such as hiking maps, wall maps, globes and customized maps.



Countries of the World
Scratch Map.



Contact information

E-mail: orgadmaps@gmail.com

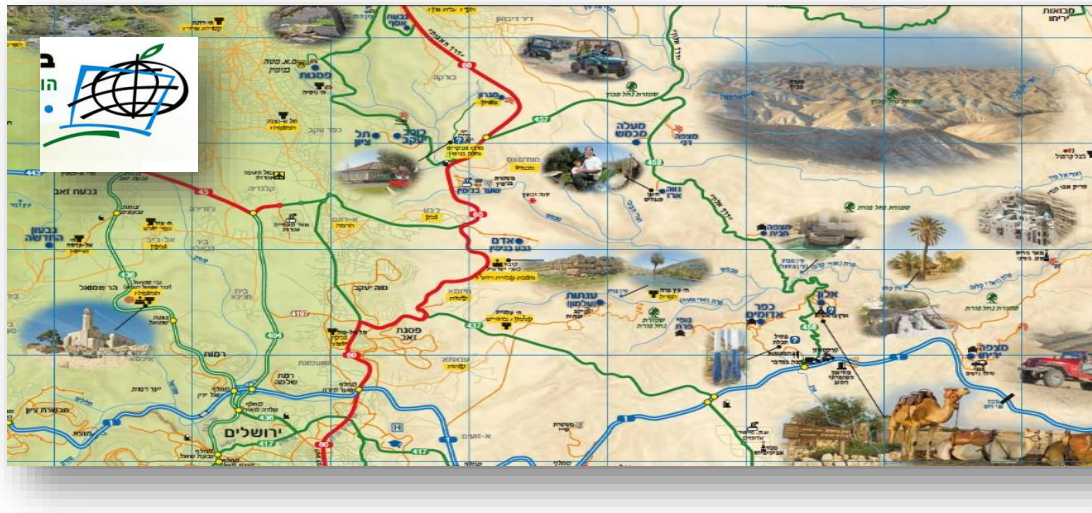
Website: <https://orgadmaps.co.il/>

Telephone: +972-8-933-1911

Map shop address: 15 Bilu St., Rehovot, Israel



Blustein Mapot Veod L.T.D.



Blushtein Mapot Veod (maps and more) publishing specializes in map production in a wide array of fields: City maps, regional maps, tourism maps, planning maps and other maps for publication.

The publishing company has vast information and tools suitable for editing city touristic data such as planning tour routes, writing and editing of municipal data and consulting services to Local Authorities in the field of mapping and sign posting.

The publishing company offers advanced mapping solutions and high-quality printing with regard to the finest details.

The long-time experience dictates a high level of production as map production requires high precision combined with advanced computer and graphics skills.

Each map has a full index, updated list of institutions. International compliant symbology and an editorial team consisting of geographers, city planner and copywriter.

The studio uses advanced graphic software such as Illustrator, Photoshop, InDesign and more.

Contact information

E-mail: mapotveod@gmail.com

Website: <http://www.mapotveod.com/>

Telefax: +972-4-8751630

Address: POB 855, Qiryat Yam 29107, Israel

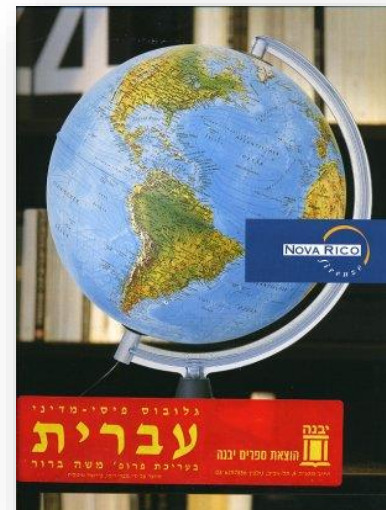
Bonus-Yavne Publishing

Yavne publishing has a wide variety of cartographic products:

1. **Atlases** in Hebrew are updated for elementary schools, high schools and university students.

2. **Globes** in Hebrew produced by the world-famous Nova Rico company in Italy. High quality and precision assure years of enjoyment. The globes are custom tailored for the Israeli pupil, keeping up to date and high scientific level. Globes from the "Elite" series are lit- lights off show a physical map and light on show a political map. Globes come in 20, 26 and 30 cm diameter.

3. **Wall maps** for schools.



Contact information

E-mail: bonus@bonusbooks.co.il

Website: www.bonusbooks.co.il

Telephone: +972-8-9331170

Fax: +972-8-9331181

Address: HaYarden 3 St., POB 13182, North Industrial Area, Yavne 81228, Israel.

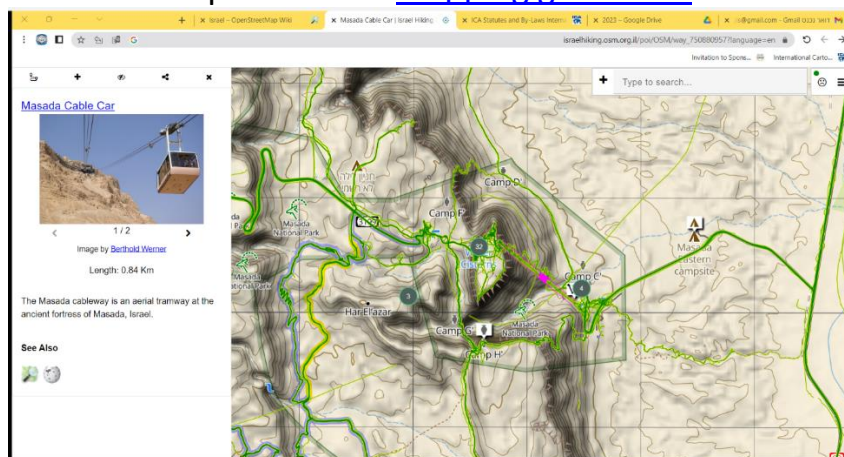
Israel Hiking and Biking Map



Israel Hiking Map is an OSM based vector maps provider, website and mobile application, that allows the public to record, navigate and share their knowledge of their experiences when traveling the magnificent outdoors of Israel.

New features include viewing in Hebrew or English base maps, change of base maps including Satellite imagery and a new popular heat map of Israeli hiking and cycling preferences recorded in the field.

The site also refers to specific OSM [mapping guidelines](#) for Israel.



Vector Map



3D buildings



POI's



Route planning



Dynamic hillshading

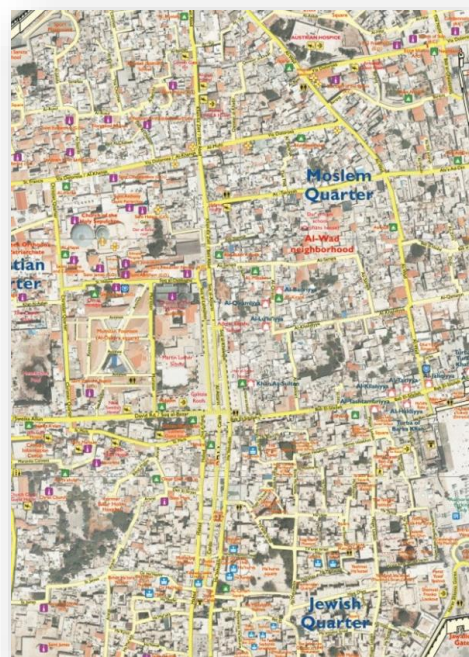
Contact information

E-mail: israelhikingmap@gmail.com

Website: <https://israelhiking.osm.org.il>

Ad-Or- Mapping the Old City of Jerusalem

Mapping cities is based on orthophotos and work from the office. In the old city of Jerusalem, it is not possible to rely only on the aerial photograph. Only when you walk through all the small streets, you can make sure that the markings of the streets are accurate. Dozens of mosques, monasteries and churches are scattered in the old city and there is no map that correctly maps them. Only in the old city of Jerusalem the names of the streets are completely different when moving from language to language. There is no map where you can see the names in all languages.



Ami Meitav, who oversaw the Old City on behalf of the Ministry of Defense and graduated with a master's degree in Land of Israel Studies and Archaeology, produced the only map that is accurate to the square kilometer of the Holy Basin. The research information on all the sites appears in Ami's book "One Square Kilometer".

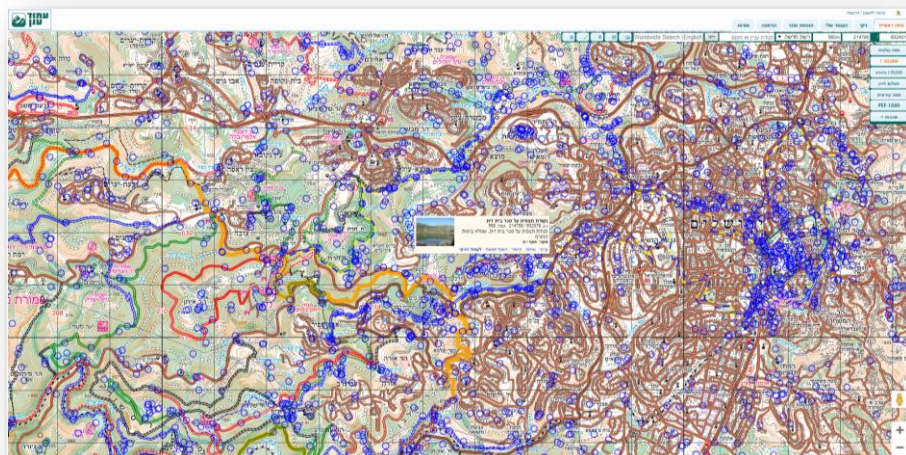
Contact information

E-mail: ametav@gmail.com

Website: <https://www.oldcity-map.com/>

Telephone: +972-52-4521113

Amud Anan Online Geo-Encyclopedia



The purpose of the "Amud Anan" is to display maps of the Land of Israel and to create an online geo-encyclopedia that will be accessible to the public, free of charge. All this in order to be a tool for travelers, students, and lovers of the Land of Israel. The maps on the site are a 1: 50,000 scale topographical map and a 1: 250,000 map of the Israel Mapping Center. The site also contains an ancient map of the British Foundation for the Exploration of the Land of Israel from 1880, which was scanned from the collection of Mr. Dan Yardeni. You can view a continuous map of Israel, switch between maps, draw routes and save them to a file, and receive a PDF file for printing on your home printer.

The marked paths that appear on the site were measured in the field by GPS, most (but not all) by a field motorcycle, and were received courtesy of Mr. Noam Etzioni. Not all the existing paths in the area have been mapped, and some of the marking may not be up-to-date. There may be errors in this material, and we will be happy to receive corrections and updates based on an examination in the field. Some of the trails are mapped by a GPS device manufactured by Magellan, which was supplied to us by the Paz Logistics Company and will soon be able to add track recordings for better mapping.

Contact information

E-mail: support@amudanan.co.il

Website: <https://amudanan.co.il/>

Address: Rimon 349 POB 84, Tzur Hadasa 99875, Israel

Reuven & Tamar Soffer specializes in planning, editing and production of maps for various purposes and in different formats.

The map production is done using the most advanced GIS technologies in the profession. The editing of the maps is executed at the highest cartographic standards.

The company prepares maps on various topics:

- Maps for geographic education and research books.
- Maps for travel books, history books and bibles.
- Wall maps of high quality for teaching and presentation.



Custom made black and white maps are available with a unique topographic background.

Contact information

E-mail: msmapa@gmail.com

Telephone: +972-50-4482556

Touch Israel

Touch Israel's' raised-relief maps intend to contribute to a better knowledge of the geography and landscapes of Israel, in a time regular paper maps are no longer attractive.

Raised-relief maps are an excellent didactic tool for learning about a country: a single look at our map can explain why there is a desert between the mountains of Jerusalem and the Dead Sea, or why it's so humid in Tel Aviv and dry in Jerusalem. The Syro-African Rift appears clearly, and so on.

In addition, such map will help understanding geo-political problems of the region and the strategic importance of the topography.

Even though they are not meant to be a scientific tool, our maps combine precision, a wealth of information, together with an aesthetic design. The result is an attractive map which will catch the attention of anyone.

The quality of these 3-D map will fit in public institutions such as community centers, libraries, classrooms, waiting rooms, as well as private homes. Raised-relief maps make also a wonderful gift for Bar / Bat Mitzvah, wedding, birthday, employees committees and more.

Available in Hebrew, English, French, Russian and in Korean.

Contact information

Website: <http://www.touch-israel.com/en/>

Tel: +972-50-3818976

Fax: +972-2-9974513

Address: Touch Israel, Alon 489, 90618 D.N. Arvot Jericho, Israel





The Israel Orienteering Association and its member clubs organize and run all types of orienteering events – from high level competitions to recreational orienteering activities. Orienteering events are held on both Friday and Saturday throughout the country.

Easy orienteering courses and instruction for youngsters and newcomers are usually offered at orienteering events.

Israel – Orienteering Destination

Israel offers a unique diversity of terrain, from prairie and badlands in the south, to Mediterranean woods along the coastal plain, to classic pine forests in the north of the country. Even more, you'll enjoy exploring and discovering historical, cultural and religious sites alongside every venue.

If you are looking for a warm and welcoming location for winter training and travel, Israel is the perfect destination. The Israel orienteering community welcomes international visitors with great hospitality.

Israel Orienteering League

The orienteering league season in Israel runs from October through May.

[Orienteering League Schedule 2022-23.](#)

Sprint League competitions are held in the warmer months. **Forest**

League competitions take place in the cooler winter months. Both leagues also include a 2-day championship event. Several hundred competitors regularly take part in these events.

The season highlight is the annual 2-day [Israel Open Championship](#) in March, which attracts numerous competitors from outside Israel. The season also includes a 2-day Sprint Championship in May.

Contact information

E-mail: office@nivut.org.il

Website: <https://israelorienteering.org>

Phone: +972-74-7407773; Mobile: +972-54-6597974

Address: Hakfar Hayarok | Ramat Hasharon 4780000 | Israel

Prof. Moshe Brawer 1919-2020

Prof. Moshe Brawer, who for many years published atlases, studied in educational institutions and academies in Israel and around the world, and was awarded the Israel Prize for the year 2007, has passed away at the age of 101.

Brawer was born in Vienna in 1919 and immigrated to Israel with his family when he was one year old.



In 1938 he began his studies at the University of London, and after the War of Independence he returned to England to complete his qualification as a Doctor of Science. In the past, he wrote for the newspaper "The Observer", covered the Bergen-Belsen camp and the Nuremberg trials.

Brawer previously served as Dean of the Faculty of Humanities at Tel Aviv University. In the years 2006-2014 he served as the chairman of the government names committee and since then he has served as honorary chairman. He got his love for maps from his father, who used to take him on geographical tours, and already at the age of 14 he was proofreading the maps he made.

Brawer was a consultant to the governments of Israel for determining the borders in the peace agreements with Egypt and Jordan, and participated in the discussions to determine the border with Syria in the 1990s. "Father was involved in setting borders, and among other things he was among those who set the border with Jordan," said his daughter. "He was a teacher at the university and people from all over the world would call him to consult him on these issues. He was a man of his kind and above". Obviously, following him his children also went to the academy, he liked to listen to classical music and operas in his spare time. "Dad found satisfaction mainly in the fields of science," shared his daughter. "He also worked for the publication of the Arab Atlas.

יהי זכרו ברוך

Prof. Naftali Kadmon 1925-2022

Naftali Kadmon was born in 1925 as Fritz Hermann Kaufmann (Fritz Hermann Kaufmann) in Aachen, Germany to Yitzhak-Julius and Eliza-Elsa Kaufmann. He studied for three years at a Jewish public school in Cologne, after the Nazis came to power in Germany he immigrated to Israel in 1934, and grew up in Jerusalem. During the War of Independence, he served as a mechanic in the Air Force, and between 1951 and 1954 he was the national training coordinator of the Israel Aviation Club.



As part of this, he conducted an aviation segment on the radio's youth program.

Kadmon was awarded the title of Israeli champion in aviation, in the summer of 1954 he represented the Israeli aviation club in the Down Aeronautical Competition in Denmark and in 1959 in the competition in Belgium. In the reserves, he served as a liaison officer to the UN on the northern border. Kadmon studied geography and statistics at the Hebrew University of Jerusalem, at the same time he worked in the government surveying department as head of the cartography department. He served in this position for about 37 years (during which time the name of the department changed to the "Center for Mapping Israel"). As part of his work, he was a member of the Israel Atlas system in the first three editions (1956-1964, 1972, 1985) and the "New Israel Atlas" 1995 edition. He studied for a master's degree in topography at the University of Glasgow. He received a doctorate in digital cartography from the University of Wales. He taught cartography at Tel Aviv University in the 1970s and at the Hebrew University in the 1980s. In 1994 he retired as an emeritus professor, but continued to teach there on a voluntary basis. A new mapping method in the same year he was among the founders of the Israeli Cartographic Association and represented it for many years in the International Cartographic Association ICA.

Kadmon's main field of activity was toponymy (the theory of geographical names). Kadmon was a member of the Governmental Names Committee from 1965 until his death and from 1978 until his death he was the chairman of the Subcommittee for Geographical Names. From 1977 until his death, he was Israel's representative on UN committees and various international committees on geographical names. He authored many books and articles on cartography and toponymy, which were translated into many languages. His book "Maps and Mapping", which he wrote together with Avshalom Shmuel, was published by Keter in 1982. His book on toponymy, *Toponymy, Laws and Language of Geographical Names*, was published in New York in 2001 and has been translated into many languages, including Japanese. Prof. Kadmon traveled extensively in Israel and around the world, documenting them in diaries in a detailed and orderly manner.

יהי זכרו ברוך

Dr. Dov Gavish 1937-2022

On December 26 2022 Dr. Dov Gavish passed away, a week before his 85th birthday.

Dr. Dov Gavish was a geographer and researcher of the cartographic and aerial history of the Land of Israel. Dr. Gavish created the archive of historical aerial photographs of Israel, in the Department of Geography at the Hebrew University of Jerusalem. He collected tens of thousands of aerial photographs, taken since the beginning of flight in Israel, as early as 1913, throughout the First World War and the period of the British Mandate, and into the years of the State of Israel.

As a geographer and researcher of Israel's cartographic heritage, he dealt with the history of surveying, mapping, and aerial photography of Israel, since the First World War, as part of his comprehensive research.

Dr. Gavish taught courses on cartography and aerial photographs in the Department of Geography.

He was a prolific writer, and even managed to finish an article a few days before his death. On his website, [dovgavish.com](https://www.dovgavish.com/), he published 19 articles (most of them in Hebrew) and 9 books (some published in both Hebrew and English). His "A survey of Palestine under the British Mandate, 1920-1948", a comprehensive and systematic handbook, published by Routledge, is "an extremely fascinating, readable and learned account of the Survey of Palestine" (IMCoS journal).

<https://www.dovgavish.com/>

יהי זכרו ברוך

